





# Who we Are

**JB Structures is an established company, with a proven track record of success, based upon responding to the needs of our clients, and of the wider industry.**

**Within JBS we strive to create an innovative culture where knowledge is shared. This is a culture for success, in which we can all work to the highest professional standards.**

**All our people are highly motivated creating a great sense of commitment, energy and ownership throughout the business.**

**JBS's reputation has been built on our commitment to deliver the best value for our clients in an innovative, safe and timely manner; this has helped JBS grow as a company and maintain repeat business time and time again with all our current clients.**



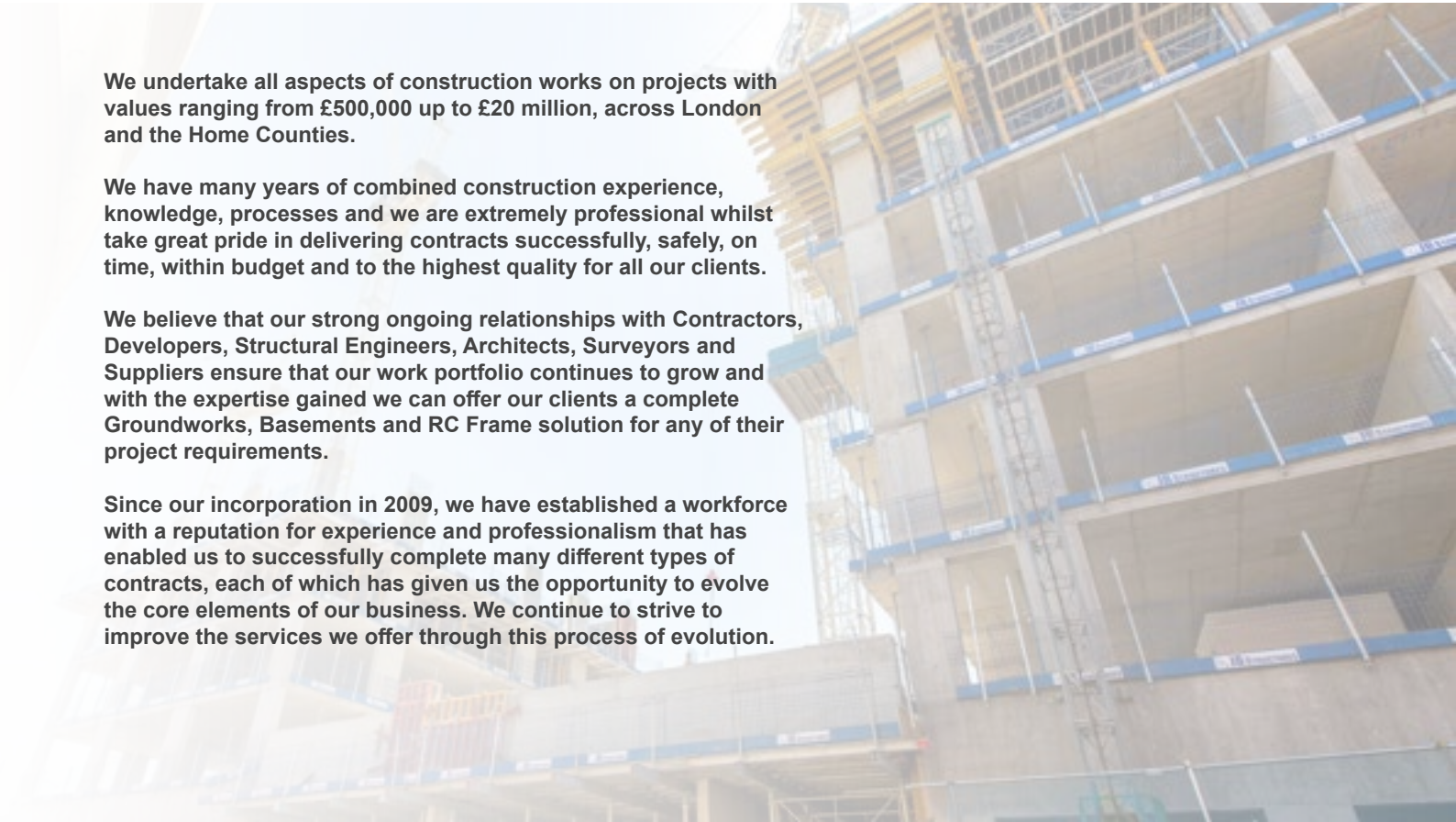
# What we Do

**We undertake all aspects of construction works on projects with values ranging from £500,000 up to £20 million, across London and the Home Counties.**

**We have many years of combined construction experience, knowledge, processes and we are extremely professional whilst take great pride in delivering contracts successfully, safely, on time, within budget and to the highest quality for all our clients.**

**We believe that our strong ongoing relationships with Contractors, Developers, Structural Engineers, Architects, Surveyors and Suppliers ensure that our work portfolio continues to grow and with the expertise gained we can offer our clients a complete Groundworks, Basements and RC Frame solution for any of their project requirements.**

**Since our incorporation in 2009, we have established a workforce with a reputation for experience and professionalism that has enabled us to successfully complete many different types of contracts, each of which has given us the opportunity to evolve the core elements of our business. We continue to strive to improve the services we offer through this process of evolution.**



# Recent Projects

Newington Causeway - Elephant & Castle



Caledonian House - Watford



Edgware Road - London



The Hub - Maidenhead



Cheshunt Lakeside - Cheshunt



Longley Place - Brighton



# Recent Projects

Rothbury Road - Fish Island



Hepscott Road - Hackney



Thomas Road - Poplar



Sheep Lane - London



Blackwall Reach - London



St Anne's - Euston



# Basements

St Mary's - Woolwich



Downs Road - Hackney



Courtney Avenue - London



Avenue Road - London



Highgate - London



King Street - Hammersmith





# Special Projects

London Road - St Albans



JB Structures provided full PC Role along with D&B Shell and Core Contract

Scope included the following:

- Demolition
- Enabling Works
- Piling
- RC Frame and Groundworks
- Brickwork Envelope
- Glazing Package
- Roofing and Membrane
- Hard Landscaping

15CC - London



JB Structures provided full PC Role along with D&B Shell and Core Contract.

Scope included the following:

- Demolition
- Enabling Works
- Piling
- Tower Crane
- RC Frame and Groundworks
- Watertight Basement
- Structural Stone
- Glazing Package
- Roofing and Membrane

# Pre-Construction

JBS have both the in-house skill set and experience to sequence and detail our client's requirements utilising 3D imagery and 4D software to depict the on site conditions and assist with pre-construction logistics and buildability at tender stage allowing programme surety.

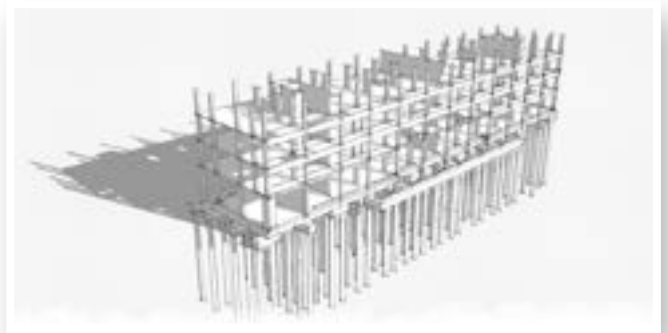
This highlights potential logistical issues and design implications at desk top level which gives both JBS and our clients the control to introduce efficiencies into the project at a very early stage which will deliver both a commercial and programme benefit.

To date we have had very positive feedback from our clients and on every occasion have benefitted from this process and encourage it wherever we can within the business.

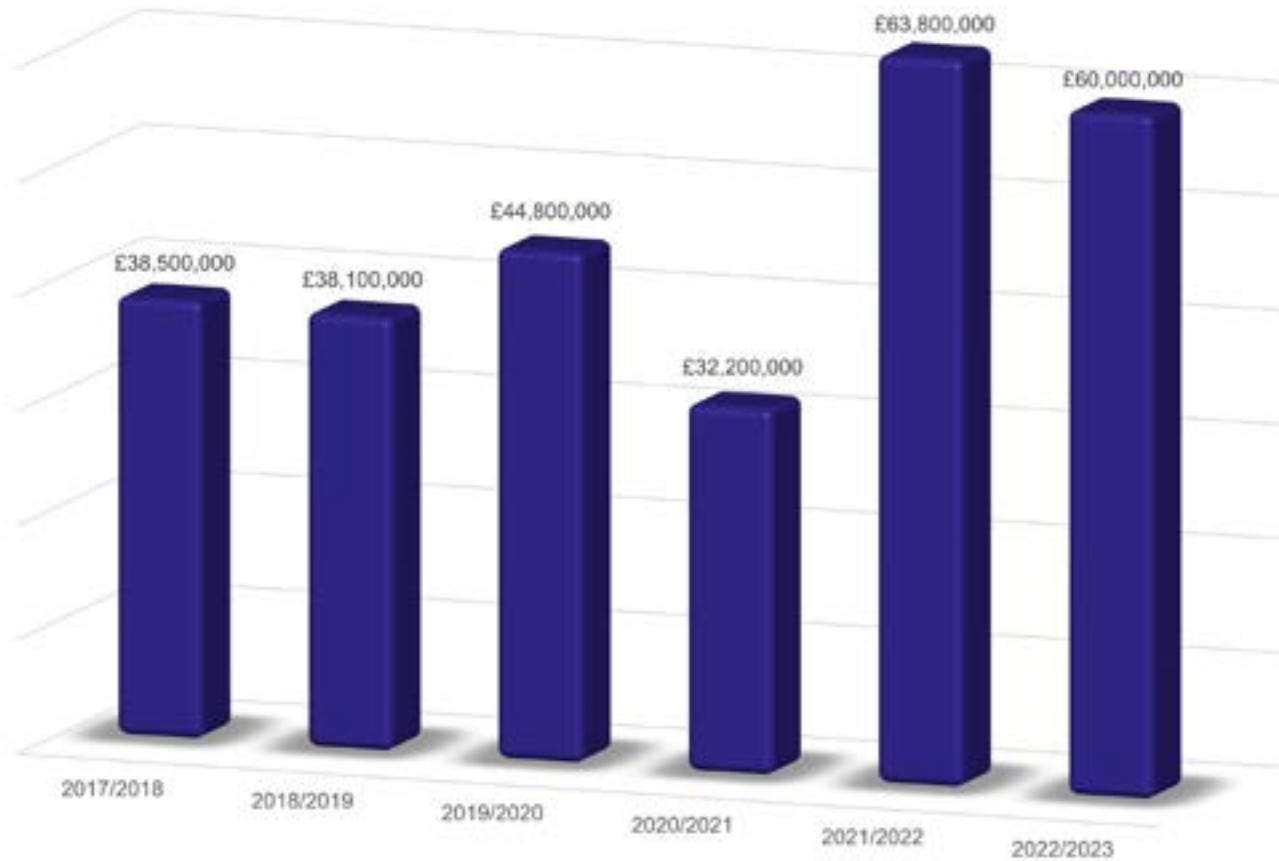
Our main ambition going forward is to introduce detailed 3D imagery on a greater level into our health and safety documentation to assist with the method statements information being communicated to our operatives and supply chain on a pictorial level which will cross all language barriers.



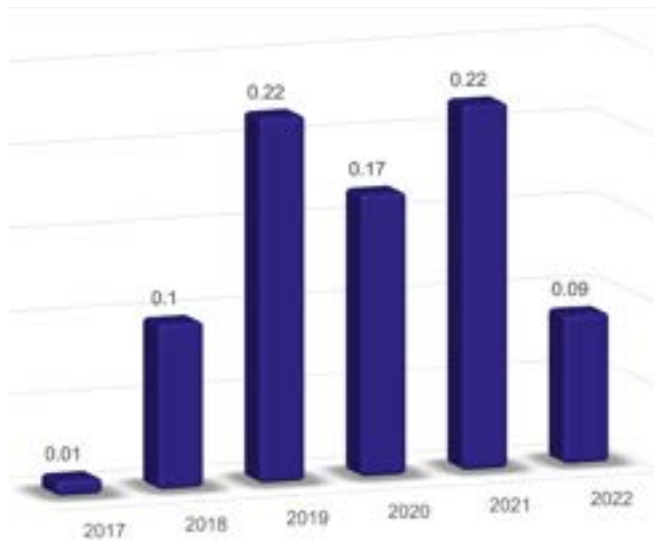
# Pre-Construction [sample imagery]



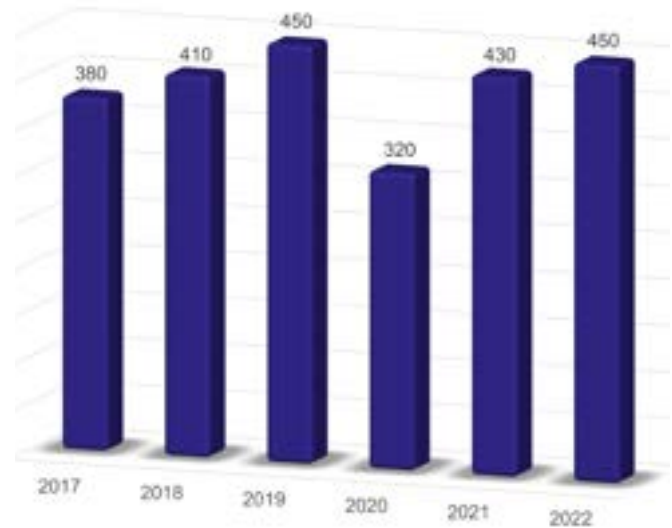
## Our Growth



# Accident Frequency Rates



Accident Frequency Rate  
(Riddor Reportable Accidents)



Operative Numbers

# Accreditations and Company Information



Registered Address: Printing House, 66 Lower Road, Harrow Middlesex HA2 0DH

Trading Address: 16 Station Road, Watford, Hertfordshire WD17 1EG

Company Reg No: 07089722

Date of Incorporation: 27th November 2009

## Our Clients



# Contact Us

16 Station Road, Watford, Hertfordshire WD17 1EG

Tel: 01923 447 435

[www.jbstructures.co.uk](http://www.jbstructures.co.uk)  
[info@jbstructures.co.uk](mailto:info@jbstructures.co.uk)  
[estimating@jbstructures.co.uk](mailto:estimating@jbstructures.co.uk)  
[enquiries@jbstructures.co.uk](mailto:enquiries@jbstructures.co.uk)

